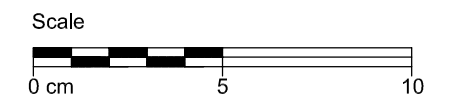


- 10 RHEINZINK - Reveal Panel Fascade
  - d Standard panel with short boxed end
- 16 RHEINZINK Building Profile
  - d Base profile
  - e Receiver strip with sealant tape
- 18 Support Profile
  - b Aluminium
- 20 Substructure\*
  - c Bracket system with thermal break
- 23 Supporting Structure
- 25 Thermal Insulation
- 30 Ventilated Air Space
  - a Ventilation gap >20mm

\* Refer to manufacturer's guidelines



## STANDARD DETAIL

Base Point + Flush profile + Ventilation inlet	Title	Scale
		1:2
	Detail-Nr.	Size
	09031003010520000001_GB_en	A3
	Drawn	gam
	Date	12.03.14

The detail describes an optional design in standard cases based on a European climate. Any user of this document is responsible to verify the feasibility of the solution with respect to the specific local situation and conditions. Using the documents provided by RHEINZINK is a service, which excludes liability for damages or claims of any kind. Contingent liability for malice or gross negligence is unaffected.