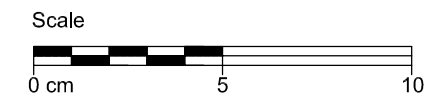


- 8 RHEINZINK-Tile Facade
 - a Standard tile
- 16 RHEINZINK-Building Profile
 - c Perforated strip
 - m Wall coping
 - j Fascia profile
 - q Cover flashing
- 18 Supporting profile
 - a Galvanised steel
 - b Aluminium
- 19 Separating Layer
 - a Structured underlay VAPOZINC®
- 20 Substructure
 - d Timber
 - e Softwood boarding
min. 24 mm x max.160 mm
 - f OSB/ veneer plywood,
thickness min. 22 mm
- 21 Batten/ Squared Timber
 - Batten
 - Squared timber
- 23 Supporting Structure
- 25 Thermal Insulation
- 30 Ventilated Air Space



STANDARD DETAIL

Facade Ridge + Flush fascia, + Two-piece	Title	Scale
		1:2
		Size
		A3
0903060001012800003_GB_en	Detail-Nr.	Drawn
		gam
		Date
		18.04.12

The detail describes an optional design in standard cases based on a European climate. Any user of this document is responsible to verify the feasibility of the solution with respect to the specific local situation and conditions. Using the documents provided by RHEINZINK is a service, which excludes liability for damages or claims of any kind. Contingent liability for malice or gross negligence is unaffected.