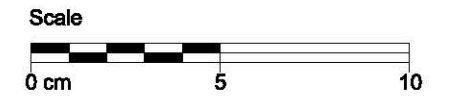


- 04 RHEINZINK-Angled Standing Seam Facade,
 16 RHEINZINK-Building Profile
- c Perforated strip
 - f Base trim
 - n Continuous clip
- 18 Support Profile
- a Galvanised steel
- 19 Separating Layer
- d Breather membrane
- 20 Substructure
- d Timber
 - h WBP plywood or OSB Grade 3
Min. 18mm thick
- 21 Batten/ Squared Timber
- Batten
 - Squared Timber
- 23 Supporting Structure
- 25 Thermal insulation
- 30 Ventilated Air Space



		
STANDARD DETAIL		
Base point +flat roof connection +ventilation inlet	Title	Scale
		1:2
	Detail-Nr.	Size
0903030301012000003_GB_en		A3
	Drawn	Date
	gam	18.05.12
<p>The detail describes an optional design in standard cases based on a European climate. Any user of this document is responsible to verify the feasibility of the solution with respect to the specific local situation and conditions. Using the documents provided by RHEINZINK is a service, which excludes liability for damages or claims of any kind. Contingent liability for malice or gross negligence is unaffected.</p>		