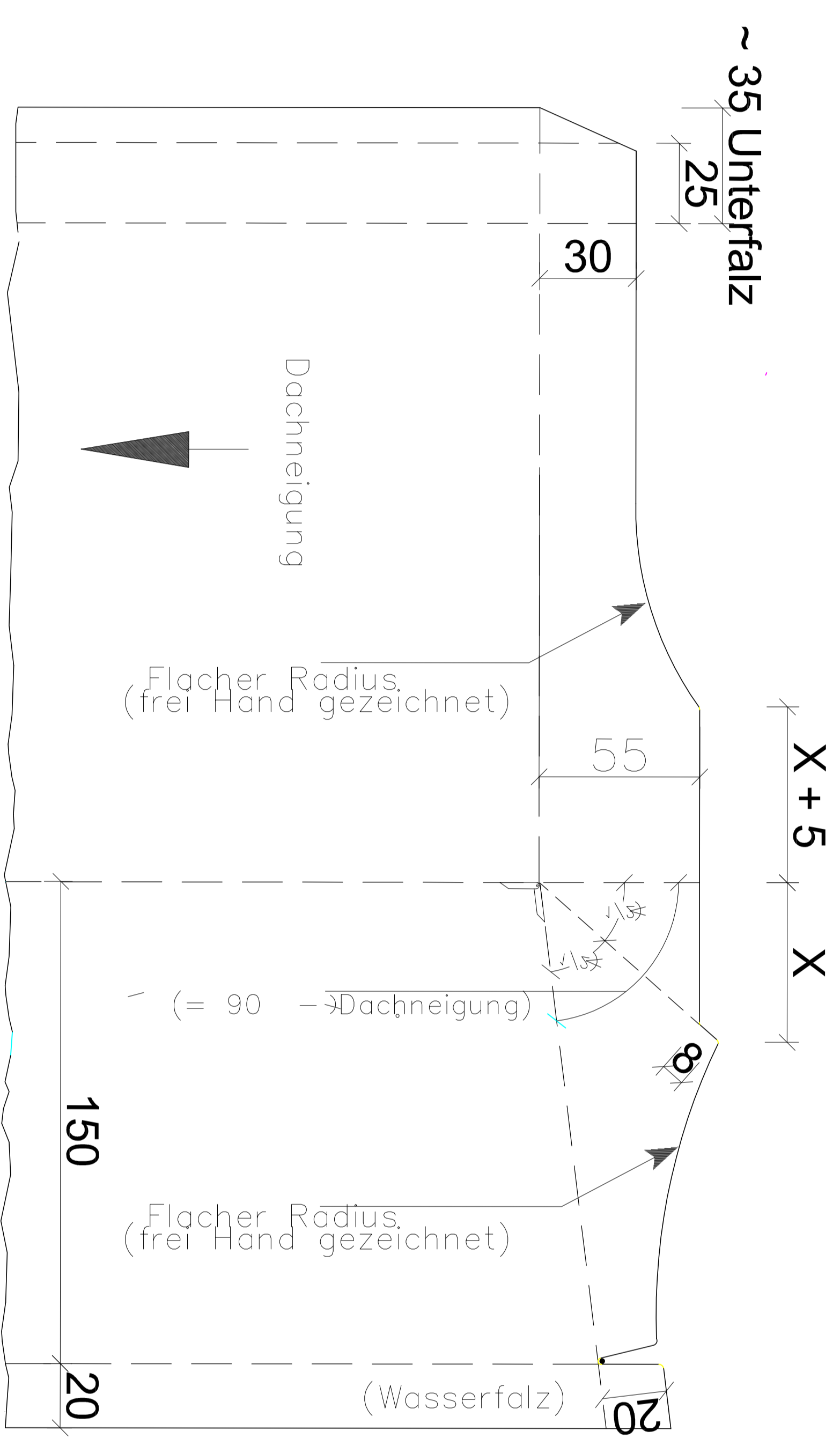
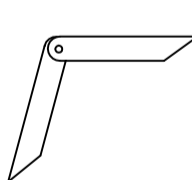






# Kamin Seitenteil hinten links Unterfalz



# Kamin Seitenteile vorne Oberfalz Papierfalzmuster

-  = Stellwinkel
-  = Vorkantung
-  = Rückkantung
-  = Ausschnitte
-  = 3mm Lochung

# Kamin Seitenteil vorne links Oberfalz

